

STANDARD DIMENSIONS

PART NUMBER	A INCHES (MM)	B INCHES (MM)	C INCHES (MM)	D INCHES (MM)	
730-0051	2.31" (58.7)	6.31" (160.3)	2.30" (58.4)	-	FIGURE 1
730-0052	2.69" (68.3)	7.69" (195.3)	2.98" (75.7)	-	
730-0053	3.25" (82.6)	8.88" (225.6)	3.74" (95.0)	-	
730-0054	3.75" (95.3)	10.25" (260.4)	4.66" (118.4)	-	
730-0055	3.20" (81.3)	9.70" (246.4)	1.94" (49.3)	2.17" (55.1)	FIGURE 2
730-0056	3.18" (80.8)	6.69" (169.9)	2.20" (55.9)	1.77" (45.0)	
730-0057	3.20" (81.3)	9.70" (246.4)	1.99" (50.5)	2.17" (55.1)	
730-0058	3.20" (81.3)	9.70" (246.4)	1.94" (49.3)	2.17" (55.1)	
730-5131	1.24" (31.5)	3.18" (80.8)	0.70" (17.8)	0.87" (22.1)	FIGURE 3

FIGURE 1

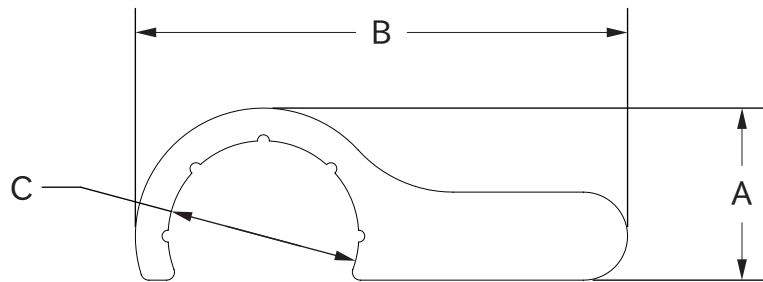


FIGURE 2

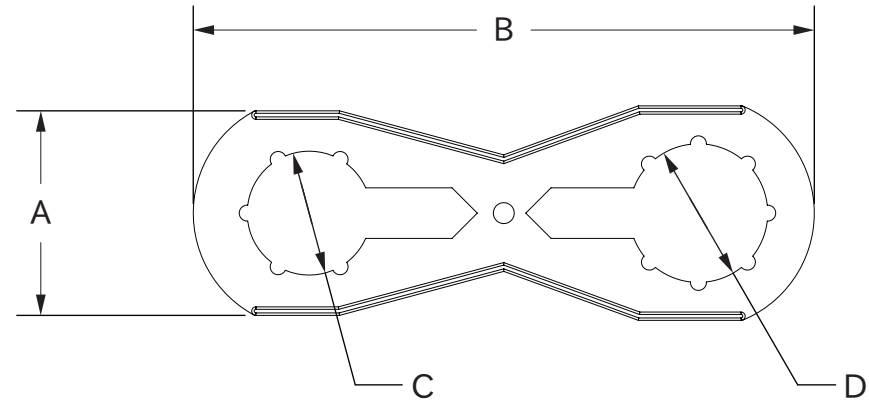


FIGURE 3

